



**17 Kings Gate Gordon Road, Haywards Heath, RH16 1DY**

**£1,395 Per Calendar Month**

[www.psphomes.co.uk](http://www.psphomes.co.uk)



**SPACIOUS MODERN APARTMENT** | A bright ground floor apartment forming part of a modern complex in a prime location for the station. Southerly courtyard garden & parking. Offered Unfurnished and available now.

#### The Flat.....

A modern two bedroom ground floor apartment forming part of the popular 'Kings Gate', within short walking distance of Haywards Heath's mainline station, perfect for commuters.

The accommodation is arranged around a central hallway with the sitting room enjoying a large window and access on to the south facing garden. The kitchen is fitted with appliances (fridge/freezer & oven/hob) and a washing machine and lies off the sitting room. The master bedroom enjoys an en-suite shower room, whilst the second bedroom is also a double and served by the modern family bathroom.

Further attributes include gas central heating, double glazing, secure telephone entry system, allocated parking and neutral décor throughout.

#### Location

Kings Gate is a purpose built development of apartments built in 2003 and situated on Gordon Road, less than a half-mile from Haywards Heath mainline station with its fast and regular services to London (London Bridge/Victoria in approx 47 mins), Gatwick International Airport and Brighton. Haywards Heath town centre is just under one mile distant and provides extensive range of shops.

The Broadway offers an excellent selection of cafés, restaurants, bars and pubs including Banana Tree, Cote, Zizzi & Pizza Express, whilst the towns leisure facilities include the Dolphin Leisure Centre. Surrounding towns and cities can be accessed via the A272 or A23(M) with the latter lying approximately five miles west of the town at Warninglid.

#### Information

Permitted Fees:

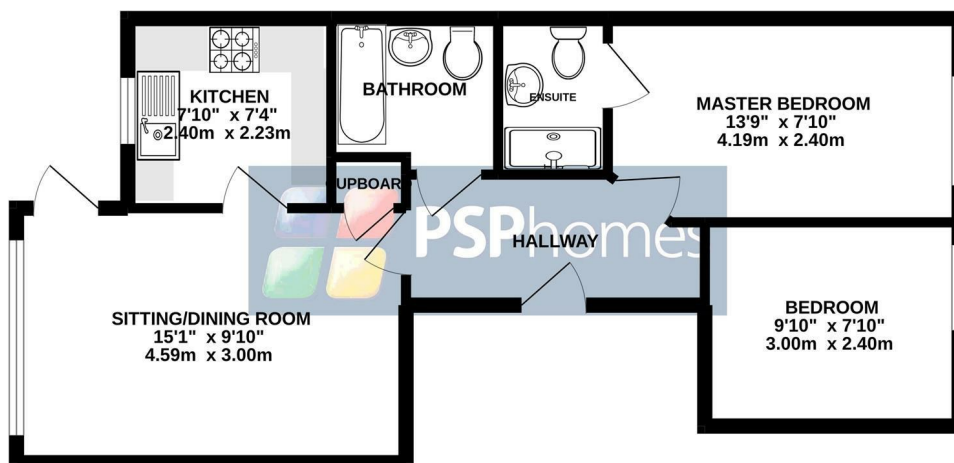
Holding deposit - one weeks rent

Deposit - five weeks rent

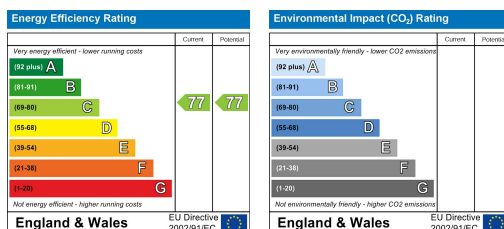
The holding deposit will be refunded against the first month's rent but can be retained if the applicant withdraws from the property, fails the reference checks due to false or misleading information or fails the Right to Rent checks.

Council Tax Band C

### GROUND FLOOR 510 sq.ft. (47.4 sq.m.) approx.



TOTAL FLOOR AREA : 510 sq.ft. (47.4 sq.m.) approx.  
Plans for illustration purposes only. Intending purchasers should check measurements personally.  
Made with Metropix ©2022



VIEWING BY APPOINTMENT WITH PSP HOMES

3 Muster Green South, Haywards Heath, West Sussex, RH16 4AP. TELEPHONE 01444 416999

OPEN SEVEN DAYS A WEEK [www.psphomes.co.uk](http://www.psphomes.co.uk)

Much care is taken in the preparation of our particulars, but we cannot guarantee the information given is accurate.  
Property details are issued a general guide only and may not form any part of an offer or contract. We recommend intending purchasers check details personally.